



BRITISH TAMIL EXAMINATION BOARD (BTEB)

பிரித்தானிய தமிழ்மொழிப் பரீட்சை சபை

www.bteb.org.uk

TAMIL LANGUAGE

GRADE 1

READING EXAMINATION - T01R

Version A

Additional materials:

Soft pencil (type B or HB)

Soft clean eraser

TIME 30 minutes

INSTRUCTIONS TO CANDIDATES

Do not open this booklet until you are told to do so.

Answer **all** questions.

Write your name, Centre number and candidate number in the spaces on this page.

Write your answers on the question paper itself.

Use pencil

At the end of the test you must hand in the question paper to your supervisor.

Dictionaries must not be used.

Date	Centre Name	Centre Number
/ /		

Candidate : Name	Candidate : Number

This question paper consists of 3 printed pages and 1 blank page.

T01R - PART I

Question 1-5

Look at the words below. Are they Fruit, Pet or Vegetables. Choose the correct answer A, B or C and put a (✓) in the box.

A



B



C



A

B

C

1. பூனை

2. மாம்பழம்

3. கரட்

4. அப்பிள்

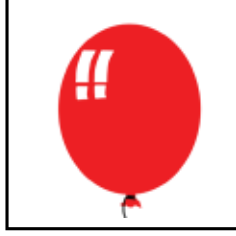
5. நாய்

T01R - PART II

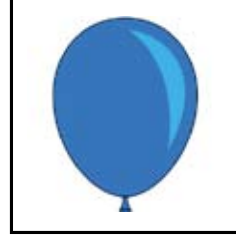
Question 6-10

Look at the words below and choose the correct picture A, B or C and circle it.

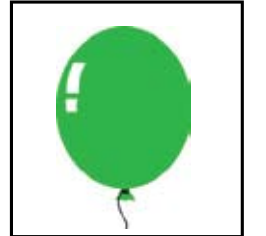
6. பச்சை பலூன்



A



B



C

7. காசும்



A



B



C

8. மேசை



A



B



C

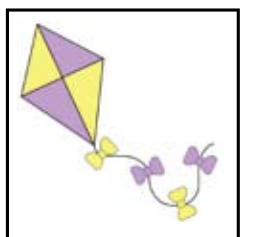
9. பட்டம்



A



B



C

10. குடை



A



B



C

BLANK PAGE